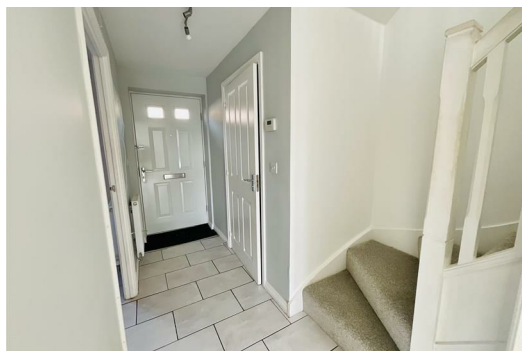




29 Stryd Bennett, Llanelli, Carmarthenshire SA15 4DJ
£775 PCM

TO LET: A THREE BEDROOMS SEMI DETACHED HOUSE located in the popular Parc Y Strade development. The Accommodation within comprises of to the Ground Floor: Entrance Hallway, Cloakroom, Kitchen and Lounge. To the First Floor: Three Bedrooms (master with En-suite) and Family Bathroom. Externally the property has front and rear gardens with Allocated Car Parking. Council Tax Band C. EPC - C. Bond Required £775. No Pets, No Smokers Available Now.



Ground Floor

Entrance

Entrance Hallway

Cloakroom

Kitchen

Lounge

First Floor

Landing

Bedroom One

En-suite

Bedroom Two

Bedroom Three

Family Bathroom

External



Energy Efficiency Rating		Environmental Impact (CO ₂) Rating			
	Current	Potential		Current	Potential
Very energy efficient - lower running costs			Very environmentally friendly - lower CO ₂ emissions		
(92 plus) A		93	(92 plus) A		
(81-91) B		80	(81-91) B		
(69-80) C			(69-80) C		
(55-68) D			(55-68) D		
(39-54) E			(39-54) E		
(21-38) F			(21-38) F		
(1-20) G			(1-20) G		
Not energy efficient - higher running costs			Not environmentally friendly - higher CO ₂ emissions		
England & Wales	EU Directive 2002/91/EC		England & Wales	EU Directive 2002/91/EC	

35 Thomas Street, Llanelli, SA15 3JE

Tel: 01554 758123

E-mail: properties@willow-estates.com

www.willow-estates.com